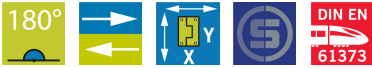


不锈钢外部可调式二维铰链 180°



不锈钢重型铰链。可在垂直和水平方向上调整 3 毫米。适用左右安装方式，开启角度 180°。

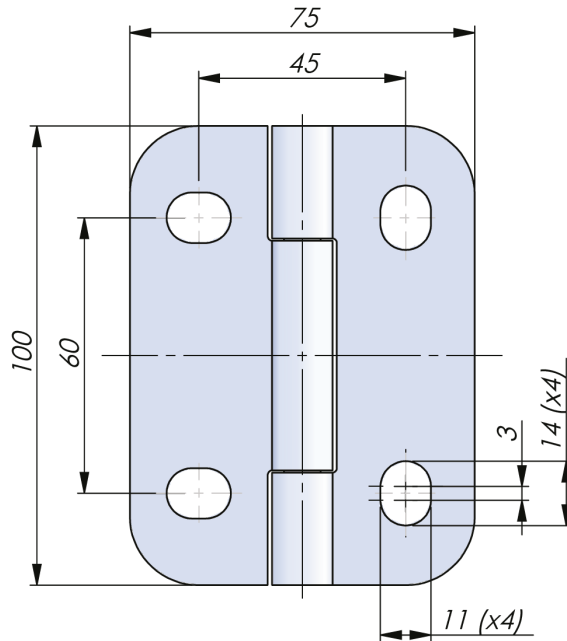
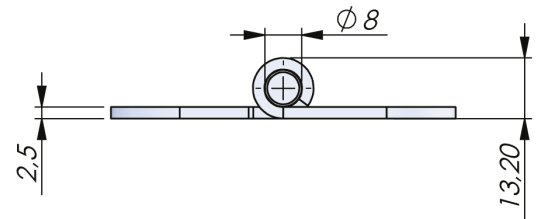


材质

铰链: Zinc die cast, zinc plated, black coated or chrome plated

TESTS & STANDARDS

标准: DIN EN 61373



Industralas
— When access counts —